

CCD 1700
180021

CAROTTEUSE À BÉTON
Concrete core drill

NOUVEAU
NEW



Forage à sec ou à eau
Water or dry drilling

Livrée avec trépan ø 83 mm
Delivered with 83 mm core drill bit

- Poignée 3 positions
- Robinet d'alimentation en eau
- Couronne diamantée ø 83 mm x 400 mm
- Prise de protection contre les surtensions
- Ergonomique : crosse d'épaule
- Filetage : 1" 1/4-7

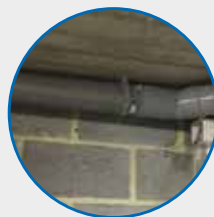
- Handle 3 positions
- Water supply tap
- Diamond core bit ø 83 mm x 400 mm
- Surge protection socket
- Ergonomic: shoulder stock
- Thread : 1" 1/4-7



Tous matériaux
All materials



Idéal pour le perçage des éclairages
Ideal for drilling lights



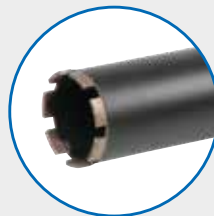
Forage à sec ou à eau
Wet or dry drilling






• Robinet d'alimentation en eau
Water supply tap

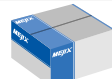





• Prise de protection contre les surtensions
Surge protection socket



• Couronne diamantée
ø 83 mm x 400 mm
Diamond core bit ø 83 mm x 400 mm

Informations techniques	Technical datas	
 230 V-50 HZ	 0-1990.min ⁻¹	 ø83mm
1700W		

Informations logistiques		Logistics information	
Box (mm)  420x365x130	 3 611351 800217	 1 pc	 6,1 Kg IP 20